



4308 50 St.

Leduc AB

T9E 6K8

<https://lchs.blackgold.ca>

Admin Corner

The holidays are coming and quarter 2 is almost over! A reminder that exams are cancelled in January and classes will continue until January 27, 2026 for most students. January 28 and 29 are non-class days. Stay tuned for more information regarding those 2 days.

As I write this, I can see the snow outside the office window. Some reminders to families and students:

1. Make sure you dress for the weather. Winter is upon us and we need to stay safe.
2. The roads are now more slippery and treacherous than before. Make sure you drive accordingly and defensively.
3. In the parking lot, drivers need to go more slowly, allowing more space for other cars and pedestrians. If we all act accordingly, the parking lot will be safe for all to use.

The doors to the school unlock at 7:45 AM. Please consider this when you are coming to school.

Our Awards celebration is this evening, November 28. We will be recognizing student achievement from across a broad range of areas of student endeavor; academic, athletic, the fine arts and citizenship. We will award over \$25 000 in scholarships and bursaries this evening.

Our music program will hold its Winter Concert on December 2 and our musical production of Frozen will run December 11 to 13. Come out and support our Arts programs!

The next **Parent Council Meeting will be held on Thursday, January 22, 2026**. Meetings are held in the LCHS staff room.

The last day of classes before the holiday break is **December 19, 2025**. Our teaching and learning team hope that you have a wonderful holiday season. Students return to classes on **January 5, 2026**.

Sincerely,

Brad Clarke, LCHS Principal

Richard Dechaine, Vice Principal

Blair Mailer, Vice Principal

Cindy McRae, Vice Principal

Learn

Create

Honour

Succeed

Important Dates this month

December 2025

December 1st - Regular School day

December 7th - Winter Music Concert

December 11th - Last Day to drop off Christmas Hamper
Gifts

December 16th - 18th - LCHS Cider House (lunch hour)

December 22nd - January 2nd - Christmas Break

January 5th - Classes Resume

Administration

Grade 8 & 12 - **Mr. Mailer** Ext. 306

Grade 9 & 10 - **Mr. Dechaine** Ext. 310

Grade 11 - **Mrs. McRae** Ext. 305

Returning grade 12 - **Mr. Clarke** Ext. 304

Counsellor Team

Mrs Lidke Ext. 313

Grade 9 & 10

Grade 11 (A-L)

Ms. Reny Ext. 315

Grade 8

Grade 11 (M-Z) & 12

Our admin and counseling teams have cycled their grade assignments.
This is who parents and students can contact to address any
questions or issues



STUDENT COUNCIL EVENTS

IMPORTANT DATES

December 3rd: Popcorn Palooza! Grab your crunchy munchies for only \$1.00 at lunchtime in the Cafeteria.

December 8th, 9th & 10th: Santa Grams! Snag a candy cane to send to someone for just \$0.50 at lunch in the Cafeteria.

December 9th: Christmas Bake Sale! Sweet treats await in the Cafeteria at lunch.

*Please remember Cash ONLY!

SANTA/ GRINCH JARS

FUNDRAISER

Starting December 3rd, students can drop their spare change into the jars of the teachers they want to see become Santa or the Grinch!

- The teacher with the most money will dress up as Santa and spread Cheer.
- The teacher with the second most will suit up as the Grinch and spread Chaos!

Jars will be available at lunch in the cafeteria and/or in the main office.

Winners will reveal their holiday spirit on the last day of classes before the break!

CIDER HOUSE

December 16th, 17th & 18th – Maclab Foyer

Students are invited to sign up and perform at lunch during our cozy Cider House event!

Enjoy live performances, festive vibes, and warm treats.

Student Council will be serving free hot chocolate, cider, and snacks for all performers and for anyone who comes out to relax, watch, and support their peers and staff members. Sign up sheets will be available in the main office. So make sure you secure your spot!

Leduc Santa's Helpers



♥ Help Us Spread Holiday Cheer with Leduc Santa's Helpers! 📺

We will be collecting all new, unwrapped gifts for Leduc Santa's Helpers starting on Monday, November 17th and ending on Thursday, December 11th.

Please look for the designated collection box in the office area. Your kindness will make a real difference this Christmas!

This holiday season, our school is proudly supporting the Leduc Santa's Helpers Society, a wonderful, volunteer-driven, non-profit organization dedicated to making Christmas brighter for families with children in the Leduc community.

For over 40 years, Leduc Santa's Helpers has embodied the spirit of giving by providing much-needed Christmas gift hampers to ensure every child, regardless of personal circumstance, has a magical holiday. Their vision is simple yet profound: that every family in Leduc has a Merry Christmas.

Since 2022, Leduc Santa's Helpers has focused specifically on filling the gift hampers, working in partnership with the Leduc & District Food Bank to ensure all local families' needs are met.

☀ What They Need for the Gift Hampers ☀

Leduc Santa's Helpers is relying on the community's generosity to fill their hampers with new, unwrapped toys and gifts for children ranging from infants to 17 years old. Our contributions will help them give a special, age-appropriate gift to every child.

Here are some suggested donations, broken down by age group:

Newborn to 2 Years: Clothes, pajamas, teething toys, learning toys, play mats, and other age-appropriate toys.

Ages 3 – 12: Clothes, pajamas, reading books, colouring/activity books, arts & crafts kits, interactive and age-appropriate toys.

Ages 13 – 17 (Teens): Pajamas, Books, Hoodies (very popular), Socks, Male/Female Wallets, Perfume/Bath/Body Packs, Teen/Personal Care Packs (makeup, grooming items), Curling irons/Blow dryers, Watches, Sports items (basketballs, soccer balls), Teen board games, Art/Drawing kits, Models, Drones.

The greatest impact comes from toys with high play value—items that are interactive and can provide a child with hours of entertainment. When shopping, consider the age recommendations on the packaging!

Leduc Santa's Helpers



We are looking for NEW/Unused items to include with our Christmas hampers. Toys, Pajamas, Socks, Games, Mitt/Toque sets, etc.

All donations are greatly appreciated! If it is popular with your children it is likely to be on the wishlist of others.

Items that are generally in short supply include:

- | | | | |
|----------------------|-------------------|------------------|----------------------------------|
| • Pajamas | • Headphones | • Art Kits | • Power Banks |
| • Socks | • Make-up Kits | • Craft Kits | • Phone Acces. |
| • Books | • Curling Irons | • Watches | • Blankets |
| • Games | • Blow Dryers | • Model Kits | • Hoodies/Sweatshirts |
| • Lego Kits | • Electric Shaver | • Pencil Crayons | • Coloring Books |
| • Drones | • RC Vehicles | • Gift Cards | • Personal Care Kits |
| • Bluetooth Speakers | | • Sports Items | (Basketballs, Soccer Balls, etc) |

Items for 0 - 2 year olds that are generally in short supply include:

- | | | |
|--|-----------------|-----------------|
| • Pajamas/Onsies/Clothes/Blankets | • Teething Toys | • Stacking Toys |
| • Learning Toys: Vtech, LeapFrog, Fisher-Price | | • Play Mats |

Check with your school for donation deadlines

Thank you for supporting Leduc Santa's Helpers and helping those less fortunate this holiday season.

The

LCHS MUSICAL THEATRE

Production of

Disney

FROZEN JR.

DECEMBER 11-13, 2025
MACLAB CENTRE FOR THE PERFORMING ARTS

Performances

DECEMBER 11 AT 7:30 PM

DECEMBER 12 AT 7:30 PM

DECEMBER 13 2:00 & 7:30 PM

Music & Lyrics by Kristen Anderson-Lopez & Robert Lopez

Book by Jennifer Lee

Based on the Disney film written by Jennifer Lee and directed by Chris Buck and Jennifer Lee

**TICKETS ON SALE FOR \$20 FROM CAST MEMBERS OR
BY CALLING LCHS AT 780-986-2248**



DISNEY'S FROZEN JR. IS PRESENTED THROUGH SPECIAL ARRANGEMENT WITH MUSIC THEATRE INTERNATIONAL (MTI).
ALL AUTHORIZED PERFORMANCE MATERIALS ARE ALSO SUPPLIED BY MTI. WWW.MTISHOWS.COM



Attention Parents/Guardians

If you do not have access to Power School Parent Portal please email the school at **lchs@blackgold.ca**. The Parent Portal allows you to view your students' attendance, marks, pay fees online, among other features. If you have an existing account, you can add additional students to the same account.

If you have moved, changed phone number(s), or have any changes to personal information, please email the school at **lchs@blackgold.ca**. It is important that we have your most current information on file.

If your student will be absent from school, please notify the office via the online form.

School Fees

Please check your PowerSchool Parent Portal for any posted School Fees. Fees do change as classes are dropped and new courses are added. If you have any questions, please contact the school at 780-986-2248

Please be advised that any uncollected fees will be reported to BG Division Office and they will submit to a collections agency.

Thank you to all for your prompt payment of all school fees.

SHOW YOUR **TIGER** PRIDE WITH NEW **LCHS**

TIGER GEAR



SCAN THE QR CODE
TO SHOP!





Off- Campus Programs

LCHS off-campus programs (Work Experience, RAP & Green Certificate) operate throughout the entire school year including the summer. For further information on each of the different programs, the teacher contacts are listed below.

Mr. Ken Saskiw
RAP & Green Certificate
780-819-6719
ken.saskiw@blackgold.ca

Mrs. St. John
Work Experience
780-986-2248
danielle.stjohn@blackgold.ca



come on in... We're open

LCHS COSMETOLOGY

PRICE LIST

HAIRCUTS AND STYLES

Price:

Ladies Haircut	\$15
Mens Haircut	\$15
Haircut and Set	\$20
Shampoo and Style	\$10

**Haircut prices include a wash & style

Color Services

Price:

Root Touch Up	\$35+
Solid Short (above chin)	\$35+
Solid Medium (above shoulders)	\$45+
Solid Long (below shoulders)	\$55+
Solid with Foils	starting at \$50+
Partial Foils	\$50+
Full Foils	\$65+
Balayage	\$65+

**Color prices include a wash & style

Perm Services

Price:

Short Hair	\$35
Medium to Long Hair	\$50
Spiral Perm	\$75

**Perm prices include a wash & style

Extras

Price:

Deep Conditioning Treatment	\$20+
Scalp Treatment	\$10
**Treatments are an add-on service to haircuts or wash & style	
Gel Polish Service	\$20
Add Nail Extensions	\$5+
Eyebrow Wax	\$5
Eyebrow Tint	\$7

**ALL PRICES ARE SUBJECT TO CHANGE

lchs cosmetology

780.986.2248
EXT.101

LEDUC COMPOSITE HIGH

COSMETOLOGY



matrix

alcove

HOT TOOLS
PROFESSIONAL

WE SELL PROFESSIONAL SALON PRODUCTS!
COME ON IN TO SEE WHAT'S AVAILABLE

CALL 780.986.2248 EXT. 101

CALL
780-986-2248
EXT. 101



Student Tutoring!

Trusted by Parents. Loved by Students.



MATH | SOCIAL | SCIENCE | LANGUAGE ARTS

WHAT WE OFFER

- VARIETY OF GRADES
- ONE-ON-ONE SESSIONS
- INCREDIBLE RATES

**Location: Leduc, and
surrounding area**

**Contact: LCHS or see student list
for details**

SCAN ME





**YOU'RE
INVITED!**

LINX OPEN HOUSE

Learn more about LINX and the role we play in the community!

JOIN US!

- Programming Info
- Opportunities
- Facility Tours
- Light Refreshments

DECEMBER 12, 2025 4:30-6:00PM
106 - 5708 47 STREET LEDUC





GRAB-N-GO

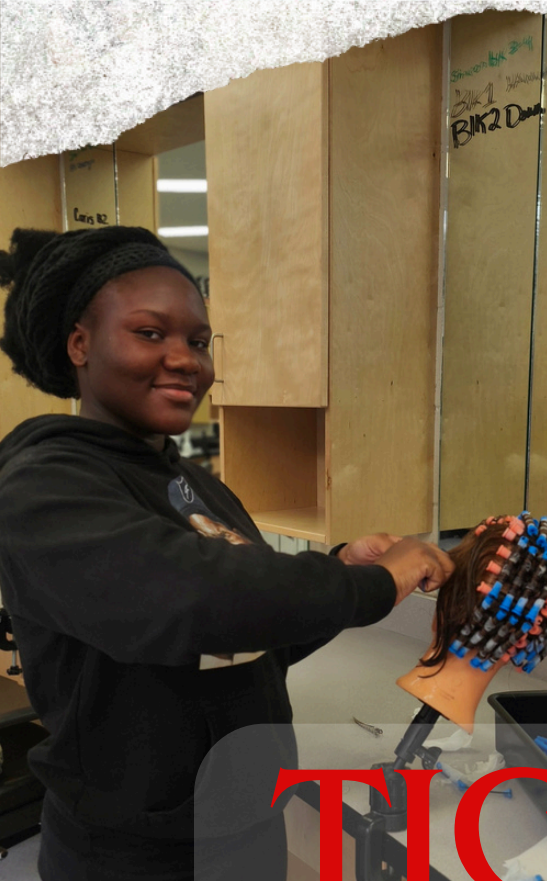
BREAKFAST

ATTENDING CLASS ON AN EMPTY STOMACH CAN HURT
YOUR FOCUS AND ENERGY LEVELS. HUNGER MAKES IT HARD
FOR YOUR BRAIN TO CONCENTRATE AND RETAIN
INFORMATION. NOURISH YOURSELF BEFORE CLASS FOR A
MORE PRODUCTIVE LEARNING EXPERIENCE!

**DON'T GO TO CLASS HUNGRY! VISIT ROOM 106 (FOODS LAB)
FROM 8:00 - 8:25 FOR FREE FOOD!**

CHECK US OUT ON INSTAGRAM: @FOODSLEDUCCOMP





TIGER



CANDIDS





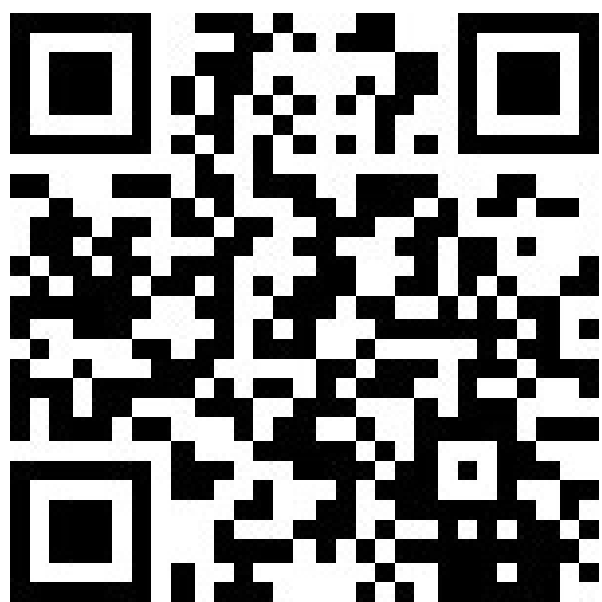
Spring 2026 **50/50 RAFFLE**



STUDENTS ARE TRAVELLING TO

EUROPE
SPRING BREAK 2026

Buy 50/50 Raffle
Tickets here



Draw Date:
December 12, 2025

www.rafflebox.ca
Licence # AGLC-754825



BRING THE WORLD HOME.

Host an international student

Why host?

Learn about other cultures and make a friend for life!



Who do I host?

Grade 9-12 students from Germany, Japan, France, Italy or Spain staying for 10 weeks, 1 semester or 1 year

Any support?

We provide a biweekly allowance to offset costs, orientation for all families and round-the-clock support

CONTACT US: bgsd.international@blackgold.ca





Dumplings from around the World



Good Food Can
Improve Your
Mood

BREAKFAST

Sandwiches on a English Muffin. (On a Bagel + \$0.50)

- Sausage Egg & Cheese \$4.50
- Bacon Egg & Cheese \$4.50
- Ham Egg & Cheese \$4.50
- Egg BLT on a Bagel \$6.00
- Beyond Breakfast \$5.00
- Hash Browns \$2.50
- Toast with PB or Jam \$2.75
- Toasted Bagel with Butter \$2.75

Healthy Option Vegetarian Gluten Free

SUBS & SANDWICHES

- Grilled Cheese Sandwich \$4.75
with Ham, Bacon, or Turkey \$5.75
- BLT \$5.50
Bacon Lettuce & Tomato Sandwich
- TLT \$5.50
Turkey Lettuce & Tomato Sandwich
- Chicken Parm Sub \$9.50
Breaded Chicken, Marinara Sauce, Mozzarella Cheese
- Side of Nutella \$1.25
- Side of Cream Cheese \$1.25
- Side of PB or Jam \$0.75

GST IS INCLUDED IN PRICES

BURGERS

with lettuce, tomatoes, and onions.

- Hamburger \$5.50
- Cheese Burger \$6.50
- Bacon Cheese Burger \$7.50
- Veggie Burger \$6.75
- Chicken Burger \$6.00
with Lettuce, Tomatoes and Mayo

FRIES

- French Fries \$4.75
- Poutine \$9.00
Small Poutine \$6.50
- Mexi-Fries \$9.50
Fries topped with Taco Beef, Mozzarella, & Nacho Cheese
- Chicken Fingers \$6.25
with fries \$9.50
- Side of Gravy or Nacho Cheese \$1.50

HOTDOGS & SAUSAGES

- Hot Dog \$4.75
- Cheese Dog \$5.50
- Beyond Sausage \$6.50

SALAD & WRAPS

- Caesar Salad \$5.75
with Chicken \$10.00
- Chicken Wrap \$6.00
Choice of Caesar, Lettuce Tomato Ranch, or Frank's Spicy Mayo Lettuce

SNACKS SWEETS

- Cinnamon Bun \$3.50
- Churro \$2.25
- Cookie \$1.75
- Rice Crispy or Puff Wheat \$2.75
- Square or Brownie \$2.00
- Muffin \$2.50
- Gluten Free Muffin \$2.75
- Potato Chips \$2.00
- Chocolate Bar \$2.25
- Ice Cream \$3.00 to \$5.00

COLD DRINKS

- Can of Pop \$2.00
- Juice \$3.00
- Bottled Water \$2.00
- Gatorade \$3.50
- Milk | Chocolate Milk \$3.25

HOT DRINKS

- Coffee \$2.50
- Cappuccino \$2.50
- Hot Chocolate \$2.50
- Tea \$2.50



Fuel up for success visit the LCHS cafeteria and power your day! Apulia Catering have a variety of healthy and delicious options for students to choose from.

Ready to make a friend from the other side of the world?

Become a host family today!

Host families needed for **Japanese** high school students arriving in **January** and staying for **10 weeks**.

A **bi-weekly payment** is provided to offset costs, and **no prior experience** is required!

Email bgsd.international@blackgold.ca for more information or to apply!



Attention!

Take advantage of this great perk! If you are a student in Grades 8 & 9 and attending a school in Leduc or Leduc County, visit Guest Services and register for your FREE membership at the LRC & Alexandra Outdoor Pool.



ACTIVE 8's & 9's

Receive a **FREE MEMBERSHIP***
to the LRC and
Alexandra Outdoor Pool.

Division News-Board Highlights

The May Board highlights are posted to **Board Highlights** website section

The Board Highlights are a summary of our Board of Trustee meetings to communicate pertinent information to our staff, school councils, parents, students and stakeholders.

www.blackgold.ca



PLAY ON!
**WE'LL HELP WITH THE SPORT
REGISTRATION FEES.**

Alberta
**EVERY KID
CAN PLAY**

A GOVERNMENT OF ALBERTA PROGRAM
POWERED BY KIDSPORT

 Your child could be eligible for a grant up to \$250 to help cover sport registration fees! Find out more at kidsportcanada.ca/alberta/leduc-and-county

Help plan your child's future with



What is the myBlueprint Education Planner?

myBlueprint Education Planner is a student- friendly, interactive education and career/life planning tool that Black Gold junior high and high school students use to make the most informed decisions about their future.

myBlueprint allows students to visually plan towards graduation requirements while instantly discovering their eligibility for every post-secondary pathway in Canada, or compare information on apprenticeships, programs, and occupations to ensure they make better decisions and are more prepared for their futures after high school.

Students also learn the basics of financial literacy and money management, and discover what employers are looking for with job search tools tied directly to the student's occupations of interest.

As a parent/guardian, can I access myBlueprint Education Planner?

Yes! To explore the features of **myBlueprint**, you can create a Family Account and link to your child's account (requires student permission).

With direct access from home, you can get more informed and involved with your child's education, and support your child in making the most informed decisions about their future.

Why would I want access to myBlueprint Education Planner?

The family account allows you to view student artifacts and reflections, including the goals they are setting, careers they are interested in, and what they are learning in school.

You can log in to your account to comment on your child's work or receive messages from their teacher(s). Keep in mind that the Family Account has read-only access for linked student accounts – it does not allow you to complete activities or post to portfolios within the student's account.

To get started, please scan the QR code below:



How to use a QR code:

1. Open the camera on your phone
2. Point it at the code
3. Tap the link that appears

BLACK GOLD SCHOOL DIVISION



myBlueprint
education planner



Are you a new user?

Please register at: <https://app.myblueprint.ca/blackgold> myblueprint.ca/blackgold

1. Try using the "School Account Login"
- OR
2. Click on the "Sign Up" tab, if requested, enter **LeducCHS** as the **Activation Key**
- b) Select our school (Leduc Composite High School) from the drop-down menu and click "Create Account"
- c) Select "Student" and your grade
- d) CLICK and create an account.
- e) ENTER the requested information

Leduc Composite High School has partnered with **myBlueprint** to provide you with an engaging online education and career/life planning tool. **myBlueprint Education Planner (7-12)** includes many beneficial resources to support you as you progress through their education including:

- ✓ **Who Am I** – Complete 5 assessments to learn and discover more about yourself, including Learning Styles, Myers-Briggs Personality, Holland Interests, Knowledge, and Motivations
- ✓ **High School** – Visually plan courses, track progress toward graduation, and instantly identify post-secondary eligibility for opportunities in all destinations and occupations
- ✓ **Post-Secondary** – Explore post-secondary options and compare detailed information on apprenticeships, college programs, university programs, and workplace sectors across Canada
- ✓ **Goals** – Set S.M.A.R.T. goals and action plans to help achieve them
- ✓ **Occupations** – Explore occupations and compare comprehensive information on job outlooks, salary ranges, and more, including the ability to identify occupations that are a good match
- ✓ **Resumes & Cover Letters** – Record personal experiences, build resumes, and write cover letters
- ✓ **Money** – Build a budget to learn about income and expenses and develop financial literacy
- ✓ **Job Search** – Explore real-world job postings that relate to occupations of interest
- ✓ **Portfolios** – Document and reflect on learning, keep record of important learning, and share your progress with parents, teachers, or future employers



Find Us

2 Alexandra Park
Leduc Public Library
Leduc, AB T9E 4C4

Contact Us

Phone 780-986-2637
Email infodesk@leduclibrary.ca

LIBRARY HOURS

Monday - Thursday	9 a.m. - 8 p.m.
Friday	9 a.m. - 5 p.m.
Saturday	10 a.m. - 5 p.m.
**Sunday	12 - 4 p.m.

**The library is closed on Sundays from May through to the Labour Day weekend

CLOSED DAYS

Monday, September 1	Labour Day
Tuesday, September 30	Truth and Reconciliation Day
Sunday, October 12	Thanksgiving Sunday
Monday, October 13	Thanksgiving Monday
Tuesday, November 11	Remembrance Day
Wednesday, December 24, closes at 1 p.m.	Christmas Eve
Thursday, December 25	Christmas Day
Friday, December 26	Boxing Day
Wednesday, December 31, closes at 1 p.m.	New Year's Eve
Thursday, January 1	New Year's Day



Follow Us




*The following must be completed half an hour before we close:
New library cards - Renewal of library cards - Any payments - Computer use

leduclibrary.ca

BLACK GOLD SCHOOL DIVISION 2025-2026 SCHOOL YEAR CALENDAR

Monthly Calendar							Teacher Days	Student Days	Dates & Details	
AUGUST 2025	SUN	MON	TUES	WED	THUR	FRI	SAT	5	3	<div><div>August 25 & 26 - Teacher Workdays (No Students)</div><div>August 27 - School Commences for ALL Grades 1 - 12 Students</div></div>
		3	4	5	6	7	8			
		10	11	12	13	14	15			
		17	18	19	20	21	22			
		24	25	26	27	28	29			
		31								
SEPTEMBER 2025	SUN	MON	TUES	WED	THUR	FRI	SAT	20	19	<div><div>September 1 - Labour Day (Schools Closed)</div><div>September 19 - PD Day: (No Students):</div><div>September 30 - National Day for Truth & Reconciliation (Schools Closed)</div></div>
			1	2	3	4	5			
		7	8	9	10	11	12			
		14	15	16	17	18	19			
		21	22	23	24	25	26			
		28	29	30						
OCTOBER 2025	SUN	MON	TUES	WED	THUR	FRI	SAT	22	21	<div><div>October 13 - Thanksgiving Day (Schools Closed)</div><div>October 14 - PD Day (No Students)</div><div>Diploma Exam</div></div>
	2				1		3			
	9	5	6	7	8		10			
		12	13	14	15	16	17			
		19	20	21	22	23	24			
		26	27	28	29	30	31			
NOVEMBER 2025	SUN	MON	TUES	WED	THUR	FRI	SAT	15	14	<div><div>November 2 - Daylight Savings Time (clocks backward)</div><div>November 10 - 14 - Midterm Break (Schools Closed)</div><div>November 11 - Remembrance Day (Schools Closed)</div><div>Diploma Exam</div></div>
		2	3	4	5	6	7			
		9	10	11	12	13	14			
		16	17	18	19	20	21			
		23	24	25	26	27	28			
		30								
DECEMBER 2025	SUN	MON	TUES	WED	THUR	FRI	SAT	15	14	<div><div>December 22 - 31 - Christmas Vacation (Schools Closed)</div></div>
			1	2	3	4	5			
		7	8	9	10	11	12			
		14	15	16	17	18	19			
		21	22	23	24	25	26			
		28	29	30	31					
JANUARY 2026	SUN	MON	TUES	WED	THUR	FRI	SAT	20	19	<div><div>January 1 - 2 - Christmas Vacation (Schools Closed)</div><div>January 5 - School Resumes</div><div>January 30 - PD Day (No Students)</div><div>Provincial Achievement Tests (PAT)</div><div>Diploma Exam & Provincial Achievement Tests (PAT)</div><div>Diploma Exam</div></div>
	1						2			
	8	4	5	6	7		9			
		11	12	13	14	15	16			
		18	19	20	21	22	23			
		25	26	27	28	29	30			
Semester 1: Aug. 27, 2025 - Jan. 30, 2026							97	90	Semester 2 - Commences February 2, 2026	
FEBRUARY 2026	SUN	MON	TUES	WED	THUR	FRI	SAT	19	17	<div><div>February 2 - Semester 2 Commences</div><div>February 5 & 6 - ATA Teachers' Convention (No Students)</div><div>February 16 - Family Day (Schools Closed)</div></div>
	1	2	3	4	5	6	7			
		8	9	10	11	12	13			
		15	16	17	18	19	20			
		22	23	24	25	26	27			
MARCH 2026	SUN	MON	TUES	WED	THUR	FRI	SAT	20	19	<div><div>March 8 - Daylight Savings Time (clocks forward)</div><div>March 9 - PD Day (No Students)</div><div>March 30 - 31 - Spring Break (Schools Closed)</div></div>
	1	2	3	4	5	6	7			
		8	9	10	11	12	13			
		15	16	17	18	19	20			
		22	23	24	25	26	27			
		29	30	31						
APRIL 2026	SUN	MON	TUES	WED	THUR	FRI	SAT	18	17	<div><div>April 1 - 3 Spring Break (Schools Closed)</div><div>April 3 - Good Friday (No Students)</div><div>April 6 - Easter Monday (Schools Closed)</div><div>April 7 - School Resumes</div><div>April 24 - PD Day (No Students)</div><div>Diploma Exam</div></div>
	2						3			
	9	5	6	7	8		10			
		12	13	14	15	16	17			
		19	20	21	22	23	24			
		26	27	28	29	30				
MAY 2026	SUN	MON	TUES	WED	THUR	FRI	SAT	20	19	<div><div>May 15 - PD Day (No Students)</div><div>May 18 - Victoria Day (Schools Closed)</div><div>Provincial Achievement Tests (PAT)</div></div>
		3	4	5	6	7	8			
		10	11	12	13	14	15			
		17	18	19	20	21	22			
		24	25	26	27	28	29			
		31								
JUNE 2026	SUN	MON	TUES	WED	THUR	FRI	SAT	20	18	<div><div>June 21 - National Indigenous Peoples Day</div><div>June 24 - Last School Day with Diploma Exam</div><div>June 25 & 26- Teacher Workday (No Students)</div><div>Diploma Exam & PAT Administrative Window</div><div>Diploma Exam</div></div>
		7	8	9	10	11	12			
		14	15	16	17	18	19			
		21	22	23	24	25	26			
		28	29	30						
Semester 2: February 2 - June 26, 2026							97	90		
TOTAL = Operational Days- Teachers / Instructional Days- Students							194	180	Aug-Dec/25: 77 -T & 71 -S; Jan-June/26: 117 -T & 109 -S	

Approved - February 22, 2023



As the holiday season arrives, we want to take a moment to celebrate all of you, our amazing students, dedicated teachers, and supportive staff. This is a time to rest, recharge, and make wonderful memories with family and friends.